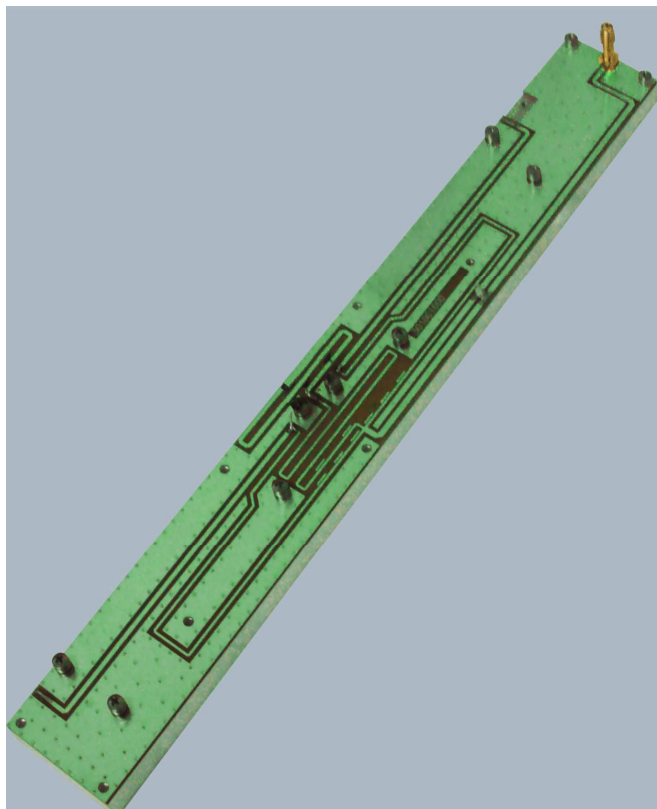


PS3005-3

3 WAY WHF POWER DIVIDER

Characteristics

- Three way, 0 degree divider
- Wilkinson configuration
- Frequency range: 170-240 MHz
- Input power 5 W (CW),
- In/out impedance: 50 ohm
- Solder tab connectin
- Dimentions (LxWxH): 355x41x25 mm
- 5 mm aluminum carrier (optional)



Typical application:

- VHF broadcasting power amplifier
- Scientific applications



RFE expert s.r.l

Strada delle Conce, 7 05018 - Orvieto (TR)
ITALY P.IVA, C.F. e Reg. Impr. Terni 01548200557
VAT

Identification n° IT 01548200557
R.E.A. TR - 105787 Cap. Soc. € 10.000,00 i.v.

www.radiofrequencyexpert.com



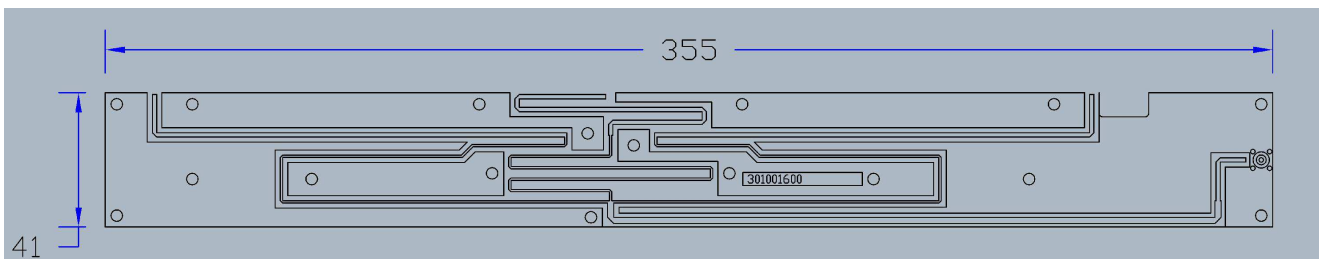
PS3005-3

3 WAY WHF POWER DIVIDER

Electrical specification:

Parameter	min	typ	max	unit
Frequency range	170		240	MHz
Input power (CW)		3	5	W
Insertion loss			0.7	dB
Isolation	18	20		dB
Amplitude unbalance		± 0.2		dB
Phase unbalance		±1		DEG
Input return loss		-26	-20	dB
Output return loss		-22	-18	dB

Mechanical dimensions: 355 x41 x25 mm



RFE expert s.r.l
Strada delle Conce, 7 05018 - Orvieto (TR)
ITALY P.IVA, C.F. e Reg. Impr. Terni 01548200557
VAT
Identification n° IT 01548200557
R.E.A. TR - 105787 Cap. Soc. € 10.000,00 i.v.
www.radiofrequencyexpert.com

