

PS2060-6

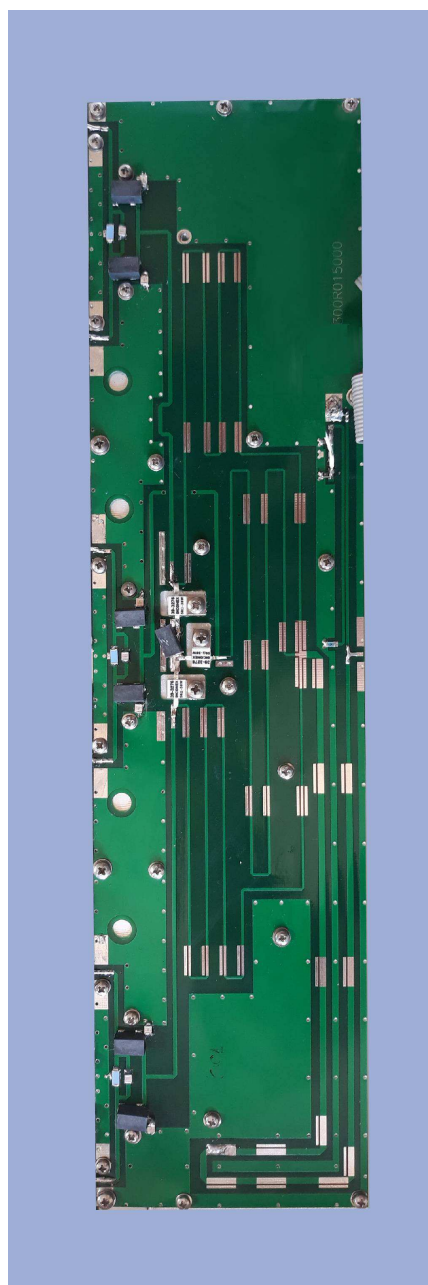
60 W 6 WAY FM POWER DIVIDER

Characteristics

- Six way, 0 degree divider
- Wilkinson configuration
- Frequency range: 87.5-108 MHz
- Input power 60 W (CW),
- In/out impedance: 50 ohm
- Solder tab connectin
- Dimentions (LxWxH): 379x93x10 mm
- 5 mm aluminum carrier

Typical application:

- FM broadcasting power amplifier
- Scientific applications



RFEexpert s.r.l
Strada delle Conce, 7 05018 - Orvieto (TR)
ITALY P.IVA, C.F. e Reg. Impr. Terni 01548200557
VAT
Identification n° IT 01548200557
R.E.A. TR - 105787 Cap. Soc. € 10.000,00 i.v.
www.radiofrequencyexpert.com



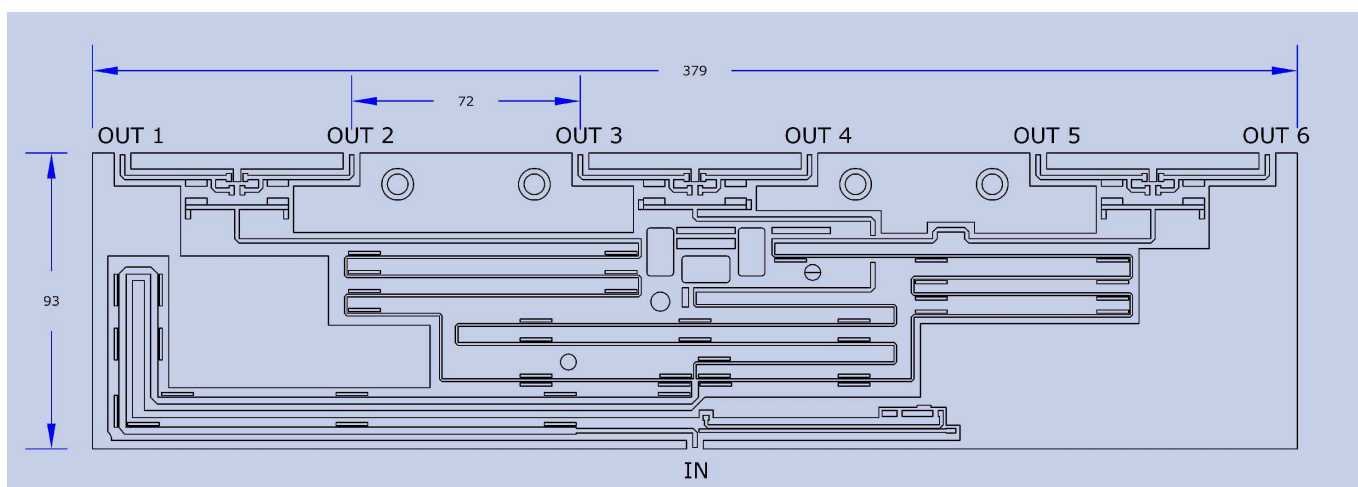
PS2060-6

60 W 6 WAY FM POWER DIVIDER

Electrical specification:

Parameter	min	typ	max	unit
Frequency range	87.5		108	MHz
Input power (CW)		60	70	W
Insertion loss			0.7	dB
Isolation	18	20		dB
Amplitude unbalance		± 0.2		dB
Phase unbalance		±0.3		DEG
Input return loss		-26	-20	dB
Output return loss		-24	-20	dB

Mechanical dimensions: 379 x93 x10 mm



RFE expert s.r.l
Strada delle Conce, 7 05018 - Orvieto (TR)
ITALY P.IVA, C.F. e Reg. Impr. Terni 01548200557
VAT
Identification n° IT 01548200557
R.E.A. TR - 105787 Cap. Soc. € 10.000,00 i.v.
www.radiofrequencyexpert.com

