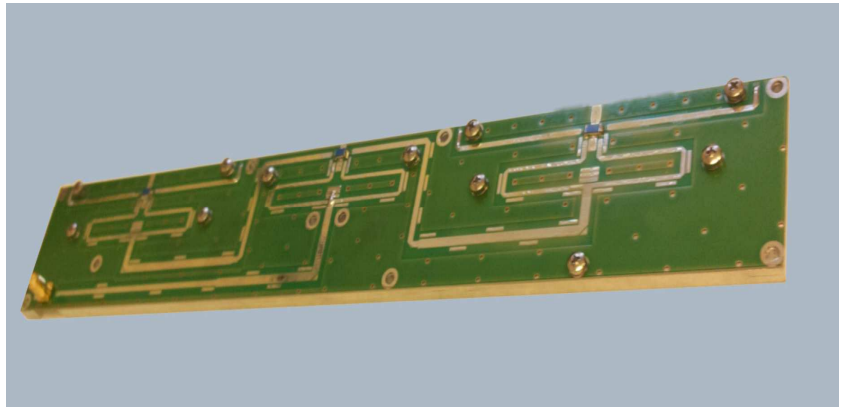


PS5050-4

50 W 4 WAY UHF POWER SPLITTER

Characteristics

- Four way 0 degree divider
- Wilkinson configuration
- Frequency range: 460-860 MHz
- Input power 50W
- In/out impedance: 50 ohm
- Solder tab connectin
- Dimentions (LxWxH): 315x50x8 mm
- 5 mm aluminum carrier



Code : 4250 050 000

Typical application:

- DVB-T/ ANALOG broadcasting power amplifier
- Scientific applications



RFExpert s.r.l
Strada delle Conce , 7 05018 - Orvieto (TR)
ITALY P.IVA, C.F. e Reg. Impr. Terni 01548200557
VAT
Identification n° IT 01548200557
R.E.A. TR - 105787 Cap. Soc. € 10.000,00 i.v.
www.radiofrequencyexpert.com



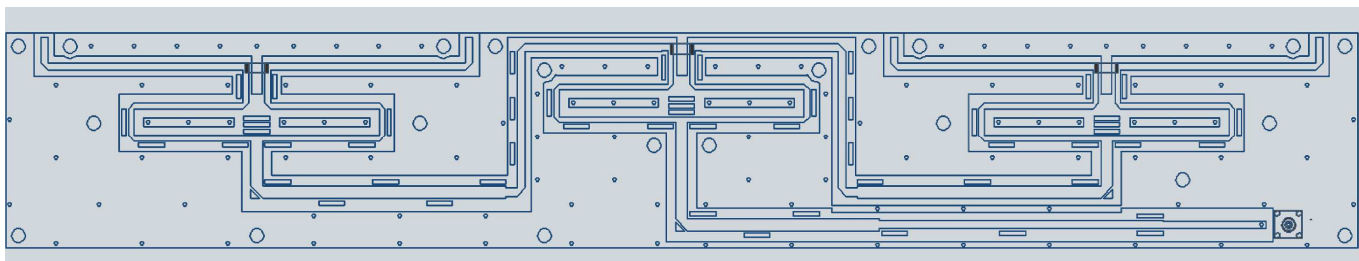
PS5050-4

50 W 4 WAY UHF POWER SPLITTER

Electrical specification:

Parameter	min	typ	max	unit
Frequency range	470		860	MHz
Input power (CW)		50	60	W
Insertion loss			0.7	dB
Isolation	20			dB
Amplitude unbalance		± 0.1		dB
Phase unbalance		±0.3		DEG
Input return loss		-24	-20	dB
Output return loss		-18	-16	dB

Mechanical dimensions: 315 x 50 x 8 mm



RFE expert s.r.l.
Strada delle Conce , 7 05018 - Orvieto (TR)
ITALY P.IVA, C.F. e Reg. Impr. Terni 01548200557
VAT
Identification n° IT 01548200557
R.E.A. TR - 105787 Cap. Soc. € 10.000,00 i.v.
www.radiofrequencyexpert.com

