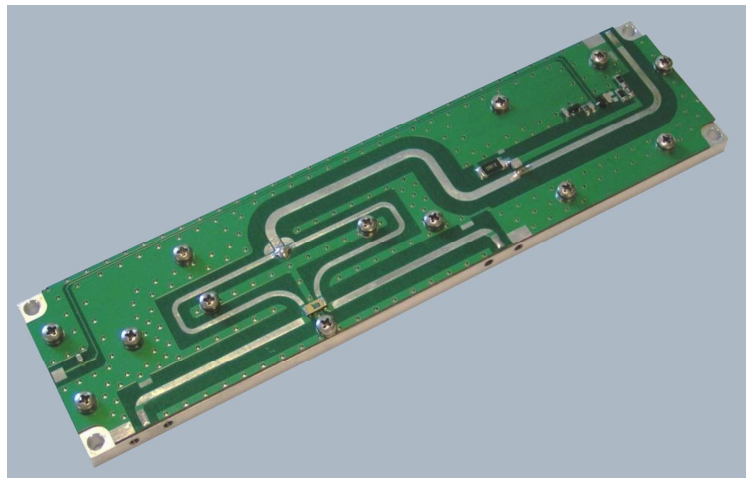


PS5050-2

50 W 2 WAY UHF POWER SPLITTER

Characteristics

- Two way power splitter
- Wilkinson configuration
- Frequency range: 460-860 MHz
- Input power 50 W
- In/out impedance: 50 ohm
- Solder tab connectin
- Dimentions (LxWxH): 180x45x10
- 5 mm aluminum carrier



Code : 4250 100 000

Typical application:

- DVB-T / ANALOG broadcasting power amplifier
- Scientific applications



RFExpert s.r.l
Strada delle Conce, 7 05018 - Orvieto (TR)
ITALY P.IVA, C.F. e Reg. Impr. Terni 01548200557
VAT
Identification n° IT 01548200557
R.E.A. TR - 105787 Cap. Soc. € 10.000,00 i.v.
www.radiofrequencyexpert.com



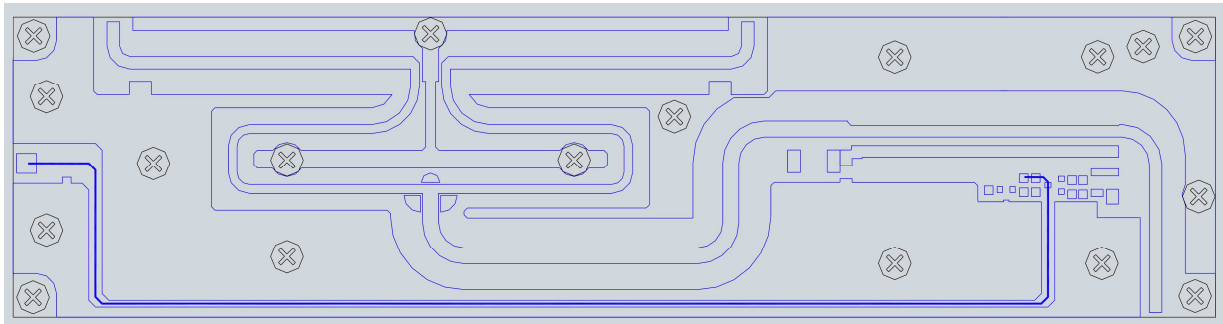
PS5050-2

50 W 2 WAY UHF POWER SPLITTER

Electrical specification:

Parameter	min	typ	max	unit
Frequency range	470		860	MHz
Input power (CW)		50	60	W
Insertion loss		0.25	0.5	dB
Isolation	18	20		dB
Amplitude unbalance		± 0.1		dB
Phase unbalance		±0.3		DEG
Input return loss		-26	-18	dB
Output return loss		-26	-20	dB

Mechanical dimensions: 180 x 45 x 10 mm



RFE expert s.r.l
Strada delle Conce, 7 05018 - Orvieto (TR)
ITALY P.IVA, C.F. e Reg. Impr. Terni 01548200557
VAT
Identification n° IT 01548200557
R.E.A. TR - 105787 Cap. Soc. € 10.000,00 i.v.
www.radiofrequencyexpert.com

