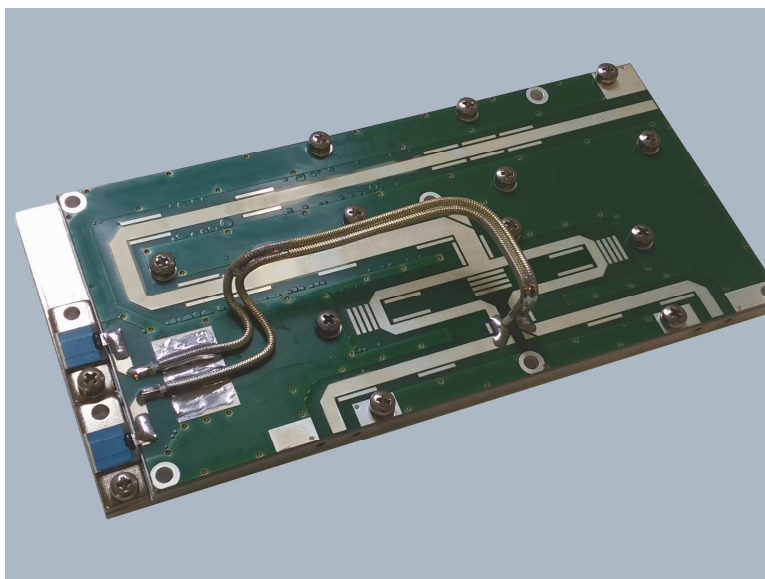


PC5600-2

600 W 2 WAY UHF POWER COMBINER

Characteristics

- Two way, 0 degree combiner
- Wilkinson configuration
- Frequency range: 460-860 MHz
- Output directinal coupler (FWD and RFL)
- Input power 600 W (CW), 1kW p.s.
- In/out impedance: 50 ohm
- Solder tab connectin
- Dimentions (LxWxH): 170x80x30 mm
- 5 mm aluminum carrier



Code : 4150 600 000

Typical application:

- DVB-T/ ANAOLG TV broadcasting power amplifier
- Scientific applications



RFExpert s.r.l

Strada delle Conce, 7 05018 - Orvieto (TR)
ITALY P.IVA, C.F. e Reg. Impr. Terni 01548200557
VAT
Identification n° IT 01548200557
R.E.A. TR - 105787 Cap. Soc. € 10.000,00 i.v.
www.radiofrequencyexpert.com



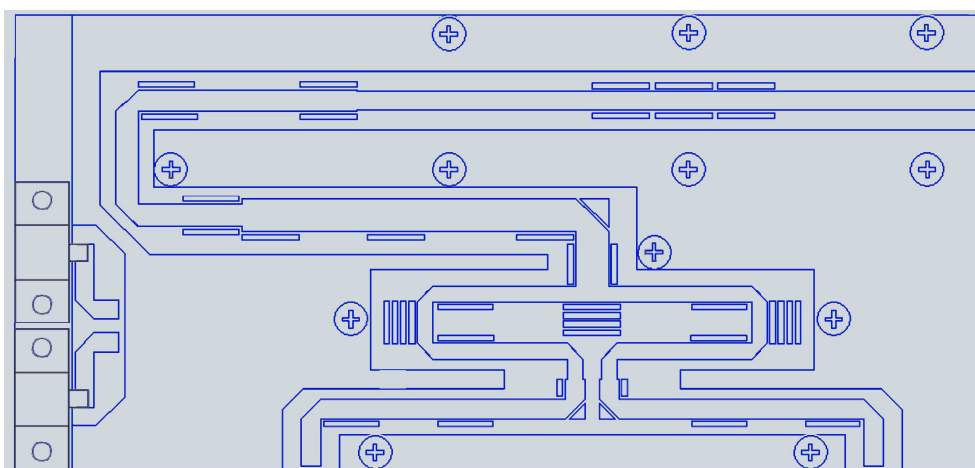
PC5600-2

600 W 2 WAY UHF POWER COMBINER

Electrical specification:

Parameter	min	typ	max	unit
Frequency range	470		860	MHz
Input power (CW)		500	600	W
Insertion loss		0,25	0,4	dB
Isolation	17	20		dB
Amplitude unbalance		± 0.15		dB
Phase unbalance		±0.3		DEG
Input return loss		-20	-18	dB
Output return loss		-22	-20	dB

Mechanical dimensions: 170 x 80 x 30 mm



RFEexpert s.r.l
Strada delle Conce, 7 05018 - Orvieto (TR)
ITALY P.IVA, C.F. e Reg. Impr. Terni 01548200557
VAT
Identification n° IT 01548200557
R.E.A. TR - 105787 Cap. Soc. € 10.000,00 i.v.
www.radiofrequencyexpert.com

