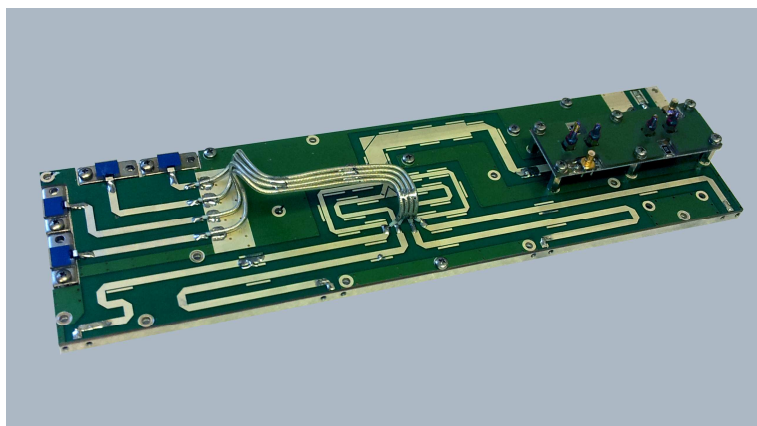


# PC501K-4

## 1 kW 4 WAY UHF POWER COMBINER

### Characteristics

- Four way, 0 degree combiner
- Wilkinson configuration
- Frequency range: 460-860 MHz
- Output directinal coupler (FWD and RFL)
- Input power 1kW (CW),
- In/out impedance: 50 ohm
- Solder tab connectin
- Dimentions (LxWxH): 311x85x30 mm
- 5 mm aluminum carrier



Code : 4150 01K 001

### Typical application:

- DVB-T/ ANAOLG TV broadcasting power amplifier
- Scientific applications



**RFEexpert s.r.l**  
Strada delle Conce, 7 05018 - Orvieto (TR)  
ITALY P.IVA, C.F. e Reg. Impr. Terni 01548200557  
VAT  
Identification n° IT 01548200557  
R.E.A. TR - 105787 Cap. Soc. € 10.000,00 i.v.  
[www.radiofrequencyexpert.com](http://www.radiofrequencyexpert.com)



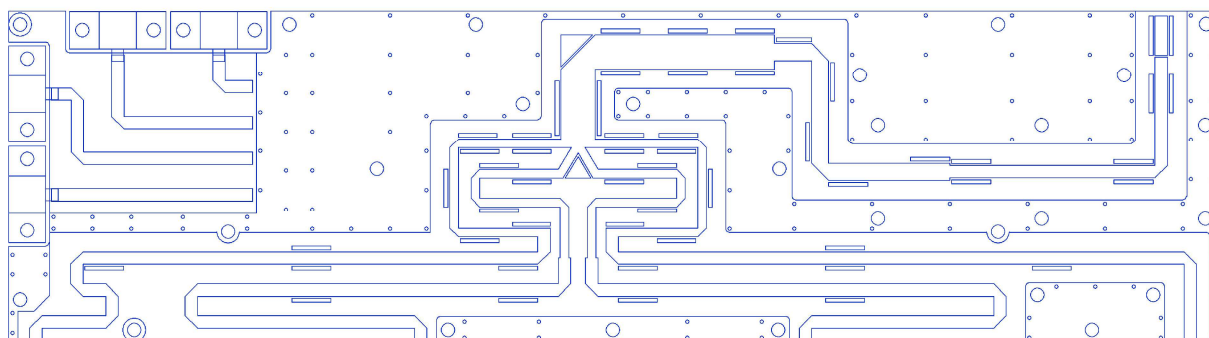
# PC501K-4

## 1 kW 4 WAY UHF POWER COMBINER

### Electrical specification:

Parameter	min	typ	max	unit
Frequency range	470		860	MHz
Input power (CW)		1000	1200	W
Insertion loss		0,3	0,5	dB
Isolation	18	20		dB
Amplitude unbalance		± 0.2		dB
Phase unbalance		±0.3		DEG
Input return loss		-20	-16	dB
Output return loss		-24	-20	dB

### Mechanical dimensions: 311 x 85 x 30 mm



RFEexpert s.r.l  
Strada delle Conce, 7 05018 - Orvieto (TR)  
ITALY P.IVA, C.F. e Reg. Impr. Terni 01548200557  
VAT  
Identification n° IT 01548200557  
R.E.A. TR - 105787 Cap. Soc. € 10.000,00 i.v.  
[www.radiofrequencyexpert.com](http://www.radiofrequencyexpert.com)

