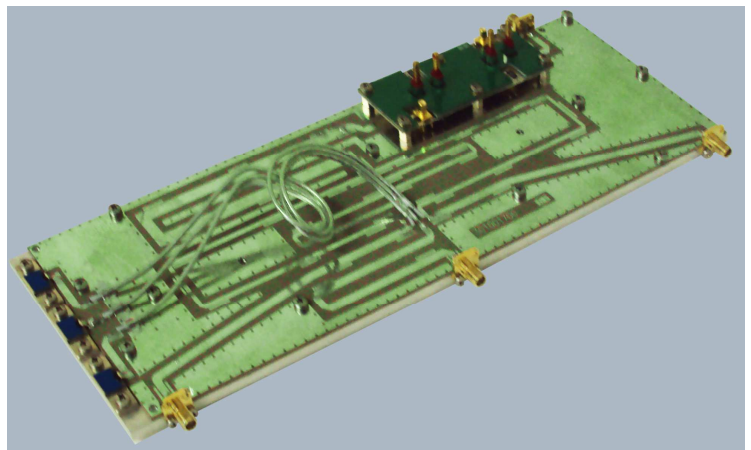


PC301K-3

1kW 3WAY VHF POWER COMBINER

Characteristics

- Three way, 0 degree combiner
- Wilkinson configuration
- Frequency range: 170-240 MHz
- Input power 1kW (CW),
- In/out impedance: 50 ohm
- Solder tab connectin
- Dimentions (LxWxH): 317x93x30 mm
- 6 mm aluminum carrier (optional)



Typical application:

- VHF broadcasting power amplifier
- Scientific applications



RFEexpert s.r.l
Strada delle Conce, 7 05018 - Orvieto (TR)
ITALY P.IVA, C.F. e Reg. Impr. Terni 01548200557
VAT
Identification n° IT 01548200557
R.E.A. TR - 105787 Cap. Soc. € 10.000,00 i.v.
www.radiofrequencyexpert.com



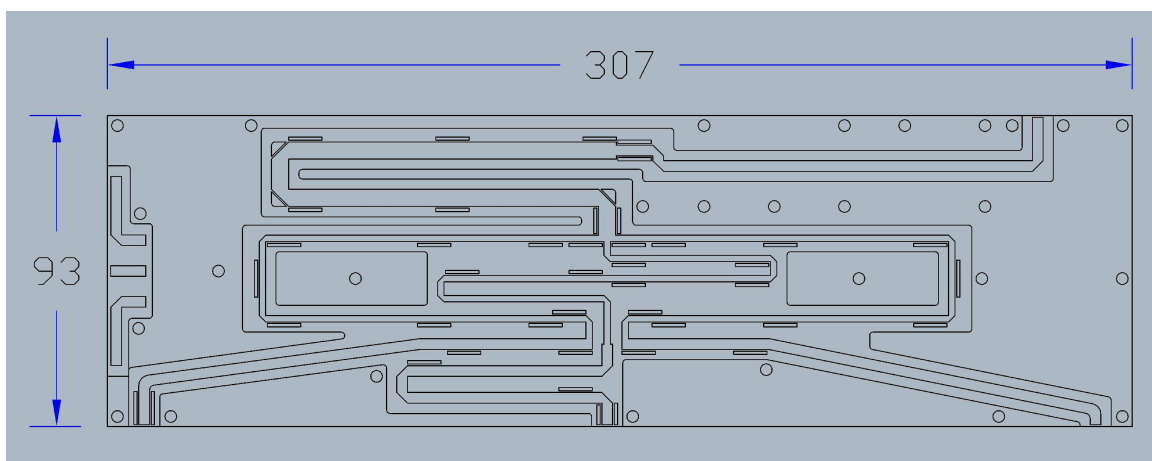
PC301K-3

1kW 3WAY VHF POWER COMBINER

Electrical specification:

Parameter	min	typ	max	unit
Frequency range	170		240	MHz
Input power (CW)		1000	1300	W
Insertion loss			0.2	dB
Isolation	20	25		dB
Amplitude unbalance		± 0.1		dB
Phase unbalance		±1		DEG
Input return loss		-25	-22	dB
Output return loss		-25	-22	dB

Mechanical dimensions: 317 x 93 x 30 mm



RFE expert s.r.l
Strada delle Conce, 7 05018 - Orvieto (TR)
ITALY P.IVA, C.F. e Reg. Impr. Terni 01548200557
VAT
Identification n° IT 01548200557
R.E.A. TR - 105787 Cap. Soc. € 10.000,00 i.v.
www.radiofrequencyexpert.com

